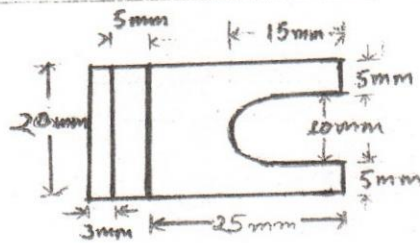
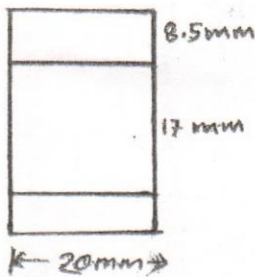


XLC CONTACT এর কারিগরি বিনির্দেশ ও আলোকচিত্র-বানৌজা নবযাত্রা ও বানৌজা জয়যাত্রা

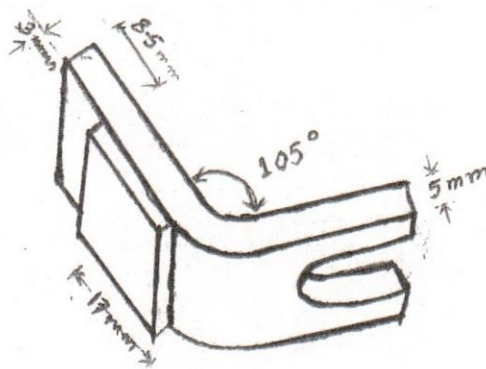
Capacity		
1.	Voltage	175-320V DC
2.	Current	200 Amps
3.	Material	Copper and Silver
Dimension		
Copper Portion		
4.	Length	30mm+ 25mm
5.	Width	20mm
6.	Thickness	05mm
Silver Portion		
7.	Dimension	20mm x 17mm x 03mm



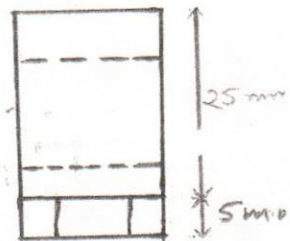
Top View



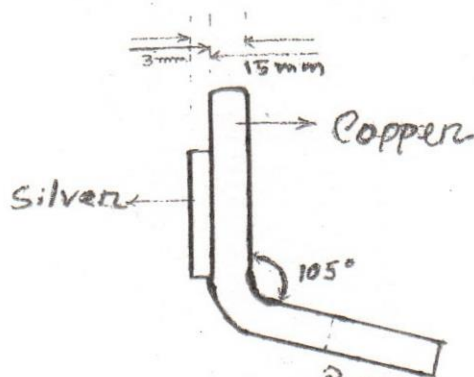
Left View



30 View



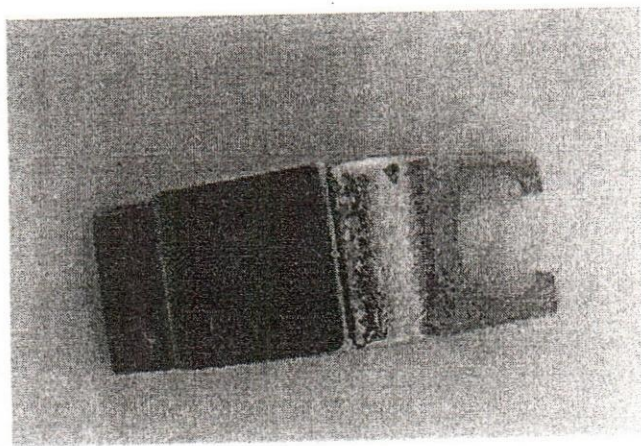
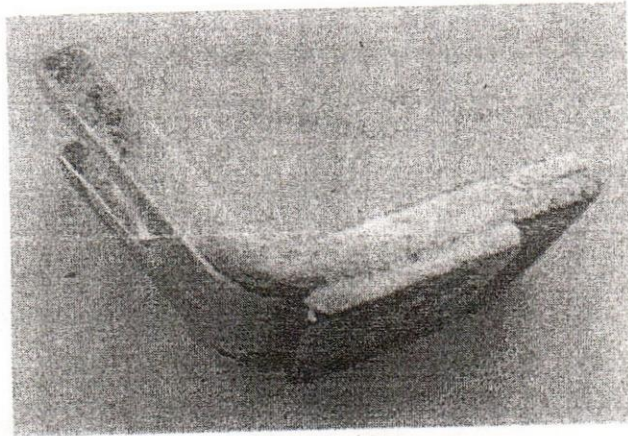
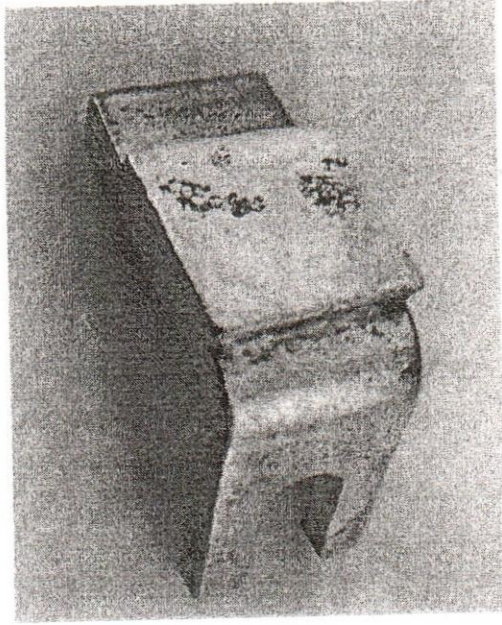
Right View



গোপনীয়
Front View

[Handwritten signature]

গোপনীয়



চিত্র - XLC Contact

স্বাক্ষর

গোপনীয়